

UK 3 N BU - Feed-through terminal block



3001514

<https://www.phoenixcontact.com/us/products/3001514>

Please be informed that the data shown in this PDF document is generated from our online catalog. Please find the complete data in the user documentation. Our general terms of use for downloads are valid.



Feed-through terminal block, nom. voltage: 800 V, nominal current: 24 A, number of connections: 2, connection method: Screw connection, Rated cross section: 2.5 mm², cross section: 0.2 mm² - 4 mm², mounting type: NS 32, NS 35/15, NS 35/7,5, color: blue

Your advantages

- Universal foot which can be used on NS 35... and NS 32... DIN rails
- The UK universal screw terminal block series has the typical features which are decisive for practical applications
- Potential distribution via fixed bridges in the terminal center or insertion bridges in the clamping space

Commercial data

Item number	3001514
Packing unit	1 pc
Minimum order quantity	1 pc
Sales key	BE12
Product key	BE1211
Catalog page	Page 459 (C-1-2019)
GTIN	4017918089962
Weight per piece (including packing)	7.408 g
Weight per piece (excluding packing)	6.701 g
Customs tariff number	85369010
Country of origin	CN

UK 3 N BU - Feed-through terminal block



3001514

<https://www.phoenixcontact.com/us/products/3001514>

Technical data

Product properties

Product type	Feed-through terminal block
Number of connections	2
Number of rows	1
Potentials	1

Insulation characteristics

Overvoltage category	III
Degree of pollution	3

Electrical properties

Rated surge voltage	8 kV
Maximum power dissipation for nominal condition	0.77 W

Connection data

Number of connections per level	2
Nominal cross section	2.5 mm ²

Level 1 above 1 below 1

Screw thread	M3
Tightening torque	0.6 ... 0.8 Nm
Stripping length	8 mm
Connection in acc. with standard	IEC 60947-7-1
Conductor cross section rigid	0.2 mm ² ... 4 mm ²
Cross section AWG	24 ... 12 (converted acc. to IEC)
Conductor cross section flexible	0.2 mm ² ... 2.5 mm ²
Conductor cross section, flexible [AWG]	24 ... 14 (converted acc. to IEC)
Conductor cross-section flexible (ferrule without plastic sleeve)	0.25 mm ² ... 2.5 mm ²
Flexible conductor cross section (ferrule with plastic sleeve)	0.25 mm ² ... 1.5 mm ²
Cross-section with insertion bridge, rigid	4 mm ²
Cross-section with insertion bridge, flexible	2.5 mm ²
2 conductors with same cross section, solid	0.2 mm ² ... 1.5 mm ²
2 conductors with same cross section, flexible	0.2 mm ² ... 1.5 mm ²
2 conductors with same cross section, flexible, with ferrule without plastic sleeve	0.25 mm ² ... 1.5 mm ²
2 conductors with the same cross section, flexible, with TWIN ferrule with plastic sleeve	0.5 mm ² ... 1 mm ²
Nominal current	24 A
Maximum load current	32 A (with 4 mm ² conductor cross section)
Nominal voltage	800 V
Nominal cross section	2.5 mm ²

Ex data

UK 3 N BU - Feed-through terminal block



3001514

<https://www.phoenixcontact.com/us/products/3001514>

Rated data (ATEX/IECEX)

Identification	⊕ II 2 GD Ex eb IIC Gb
Operating temperature range	-60 °C ... 110 °C
Ex-certified accessories	3003020 D-UK 4/10
	3006027 D-UK 16
	3004210 ATP-UK 5-MTK
	1212587 SF-SL 0,6X3,5-100 S-VDE
	1201442 E/UK
List of bridges	Fixed bridge / FBR 2-5-EX / 0716129
	Fixed bridge / FBR 10-5-EX / 2303226
	Fixed bridge / FBR 80-5-EX / 3000942
Bridge data	18.5 A / 2.5 mm ²
List of bridges	Insertion bridge / EBL 2- 5 / 2303145
	Insertion bridge / EBL 3- 5 / 2303158
	Insertion bridge / EBL 4- 5 / 2303161
	Insertion bridge / EBL 5- 5 / 2303174
	Insertion bridge / EBL 6- 5 / 2303190
	Insertion bridge / EBL 10- 5 / 2303132
Bridge data	20 A / 2.5 mm ²
Ex temperature increase	40 K (24 A / 2.5 mm ²)
Rated voltage	690 V
- At bridging between non-adjacent terminal blocks	176 V
Rated insulation voltage	630 V
output	(Permanent)

Ex level General

Rated current	21.5 A
Maximum load current	27.5 A
Contact resistance	0.5 mΩ

Ex connection data General

Torque range	0.6 Nm ... 0.8 Nm
Nominal cross section	2.5 mm ²
Rated cross section AWG	14
Connection capacity rigid	0.2 mm ² ... 4 mm ²
Connection capacity AWG	24 ... 12
Connection capacity flexible	0.2 mm ² ... 2.5 mm ²
Connection capacity AWG	24 ... 14
2 conductors with same cross section, solid	0.2 mm ² ... 1.5 mm ²
2 conductors with the same cross-section AWG rigid	24 ... 16
2 conductors with same cross section, stranded	0.2 mm ² ... 1.5 mm ²
2 conductors with the same cross-section AWG flexible	24 ... 16

Dimensions

UK 3 N BU - Feed-through terminal block



3001514

<https://www.phoenixcontact.com/us/products/3001514>

Width	5.2 mm
End cover width	1.8 mm
Height	42.5 mm
Depth on NS 32	52 mm
Depth on NS 35/7,5	47 mm
Depth on NS 35/15	54.5 mm

Material specifications

Color	blue
Flammability rating according to UL 94	V0
Insulating material group	I
Insulating material	PA
Static insulating material application in cold	-60 °C
Temperature index of insulation material (DIN EN 60216-1 (VDE 0304-21))	130 °C
Relative insulation material temperature index (Elec., UL 746 B)	130 °C
Fire protection for rail vehicles (DIN EN 45545-2) R22	HL 1 - HL 3
Fire protection for rail vehicles (DIN EN 45545-2) R23	HL 1 - HL 3
Fire protection for rail vehicles (DIN EN 45545-2) R24	HL 1 - HL 3
Fire protection for rail vehicles (DIN EN 45545-2) R26	HL 1 - HL 3
Calorimetric heat release NFPA 130 (ASTM E 1354)	28 MJ/kg
Surface flammability NFPA 130 (ASTM E 162)	passed
Specific optical density of smoke NFPA 130 (ASTM E 662)	passed
Smoke gas toxicity NFPA 130 (SMP 800C)	passed

Electrical tests

Surge voltage test

Test voltage setpoint	9.8 kV
Result	Test passed

Temperature-rise test

Requirement temperature-rise test	Increase in temperature \leq 45 K
Result	Test passed
Short-time withstand current 2.5 mm ²	0.3 kA
Short-time withstand current 4 mm ²	0.48 kA
Result	Test passed

Power-frequency withstand voltage

Test voltage setpoint	2 kV
Result	Test passed

Mechanical properties

Mechanical data

Open side panel	Yes
-----------------	-----

3001514

<https://www.phoenixcontact.com/us/products/3001514>

Mechanical tests

Mechanical strength

Result	Test passed
--------	-------------

Attachment on the carrier

DIN rail/fixing support	NS 32/NS 35
Test force setpoint	1 N
Result	Test passed

Test for conductor damage and slackening

Rotation speed	10 rpm
Revolutions	135
Conductor cross section/weight	0.2 mm ² / 0.2 kg
	2.5 mm ² / 0.7 kg
	4 mm ² / 0.9 kg
Result	Test passed

Environmental and real-life conditions

Needle-flame test

Time of exposure	30 s
Result	Test passed

Oscillation/broadband noise

Specification	DIN EN 50155 (VDE 0115-200):2008-03
Spectrum	Service life test category 2, bogie-mounted
Frequency	$f_1 = 5 \text{ Hz}$ to $f_2 = 250 \text{ Hz}$
ASD level	6.12 (m/s ²) ² /Hz
Acceleration	3.12g
Test duration per axis	5 h
Test directions	X-, Y- and Z-axis
Result	Test passed

Shocks

Specification	DIN EN 50155 (VDE 0115-200):2008-03
Pulse shape	Half-sine
Acceleration	30g
Shock duration	18 ms
Number of shocks per direction	3
Test directions	X-, Y- and Z-axis (pos. and neg.)
Result	Test passed

Ambient conditions

Ambient temperature (operation)	-60 °C ... 105 °C (max. short-term operating temperature RTI Elec.)
---------------------------------	---

UK 3 N BU - Feed-through terminal block



3001514

<https://www.phoenixcontact.com/us/products/3001514>

Ambient temperature (storage/transport)	-25 °C ... 60 °C (for a short time, not exceeding 24 h, -60 °C to +70 °C)
Ambient temperature (assembly)	-5 °C ... 70 °C
Ambient temperature (actuation)	-5 °C ... 70 °C
Permissible humidity (storage/transport)	30 % ... 70 %

Standards and regulations

Connection in acc. with standard	IEC 60947-7-1
----------------------------------	---------------

Mounting

Mounting type	NS 32
	NS 35/15
	NS 35/7,5

UK 3 N BU - Feed-through terminal block

3001514

<https://www.phoenixcontact.com/us/products/3001514>



Drawings

Circuit diagram



UK 3 N BU - Feed-through terminal block



3001514

<https://www.phoenixcontact.com/us/products/3001514>

Approvals

To download certificates, visit the product detail page: <https://www.phoenixcontact.com/us/products/3001514>

DNV Approval ID: TAE00001CT				
---------------------------------------	--	--	--	--

CSA Approval ID: 13631				
	Nominal voltage U_N	Nominal current I_N	Cross section AWG	Cross section mm^2
	600 V	20 A	28 - 12	-

IECEE CB Scheme Approval ID: NL-39956_A1				
	Nominal voltage U_N	Nominal current I_N	Cross section AWG	Cross section mm^2
	800 V	24 A	-	- 2.5

cULus Recognized Approval ID: E60425				
	Nominal voltage U_N	Nominal current I_N	Cross section AWG	Cross section mm^2
Use group B	600 V	20 A	28 - 12	-
Use group C	600 V	20 A	28 - 12	-
Use group F	800 V	20 A	28 - 12	-

KEMA-KEUR Approval ID: 71-119849				
	Nominal voltage U_N	Nominal current I_N	Cross section AWG	Cross section mm^2
	800 V	24 A	-	- 2.5

ATEX Approval ID: KEMA98ATEX1651U				
---	--	--	--	--

cUL Recognized Approval ID: E192998				
	Nominal voltage U_N	Nominal current I_N	Cross section AWG	Cross section mm^2
	300 V	20 A	28 - 12	-

UK 3 N BU - Feed-through terminal block



3001514

<https://www.phoenixcontact.com/us/products/3001514>



EAC Ex

Approval ID: RU C-DE.HA91.B.00066



GL

Approval ID: 98876-96 HH

	Nominal voltage U_N	Nominal current I_N	Cross section AWG	Cross section mm^2
EEx e II part certificate	690 V	23 A	-	- 2.5



IECEX

Approval ID: IECEX KEM 06.0034U



UL Recognized

Approval ID: E192998

	Nominal voltage U_N	Nominal current I_N	Cross section AWG	Cross section mm^2
	300 V	20 A	28 - 12	-



CCC

Approval ID: 2020322313000623



DNV GL-EX

Approval ID: TAE00003K6

	Nominal voltage U_N	Nominal current I_N	Cross section AWG	Cross section mm^2
EEx e II part certificate	440 V	32 A	-	- 2.5

cULus Recognized

UK 3 N BU - Feed-through terminal block



3001514

<https://www.phoenixcontact.com/us/products/3001514>

Classifications

ECLASS

ECLASS-11.0	27141120
ECLASS-13.0	27250101

ETIM

ETIM 8.0	EC000897
----------	----------

UNSPSC

UNSPSC 21.0	39121400
-------------	----------

UK 3 N BU - Feed-through terminal block



3001514

<https://www.phoenixcontact.com/us/products/3001514>

Environmental product compliance

China RoHS	Environmentally friendly use period: unlimited = EFUP-e
	No hazardous substances above threshold values

UK 3 N BU - Feed-through terminal block



3001514

<https://www.phoenixcontact.com/us/products/3001514>

Accessories

i Note: Applying some accessories below might limit this product.

FBR 80-5-EX - Fixed bridge

3000942

<https://www.phoenixcontact.com/us/products/3000942>

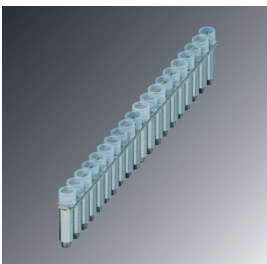


Fixed bridge, pitch: 5 mm, number of positions: 80, color: silver

FBRI 20-5 N - Fixed bridge

3000515

<https://www.phoenixcontact.com/us/products/3000515>



Fixed bridge, pitch: 5 mm, number of positions: 20, color: silver

UK 3 N BU - Feed-through terminal block

3001514

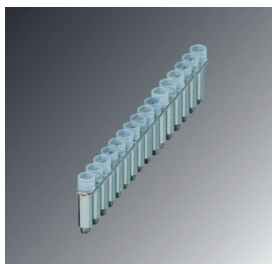
<https://www.phoenixcontact.com/us/products/3001514>



FBRI 16-5 N - Fixed bridge

3000476

<https://www.phoenixcontact.com/us/products/3000476>



Fixed bridge, number of positions: 16, color: silver

FBRI 12-5 N - Fixed bridge

3000434

<https://www.phoenixcontact.com/us/products/3000434>



Fixed bridge, number of positions: 12, color: silver

UK 3 N BU - Feed-through terminal block

3001514

<https://www.phoenixcontact.com/us/products/3001514>



FBRI 2-5 N - Fixed bridge

3000227

<https://www.phoenixcontact.com/us/products/3000227>



Fixed bridge, pitch: 5 mm, number of positions: 2, color: silver


FBRI 10-5 N - Fixed bridge

2770642

<https://www.phoenixcontact.com/us/products/2770642>



Fixed bridge, pitch: 5.2 mm, number of positions: 10, color: silver

 Max. current carrying capacity: 30 A

UK 3 N BU - Feed-through terminal block

3001514

<https://www.phoenixcontact.com/us/products/3001514>



FBR 10-5-EX - Fixed bridge

2303226

<https://www.phoenixcontact.com/us/products/2303226>

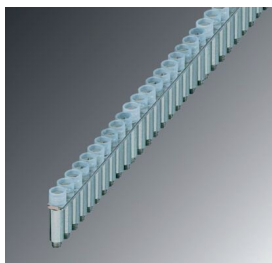


Fixed bridge, pitch: 5 mm, number of positions: 10, color: silver

FBRI 40-5 N - Fixed bridge

3006823

<https://www.phoenixcontact.com/us/products/3006823>



Fixed bridge, number of positions: 40, color: silver

UK 3 N BU - Feed-through terminal block

3001514

<https://www.phoenixcontact.com/us/products/3001514>

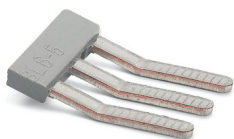



EBL 3- 5 - Insertion bridge

2303158

<https://www.phoenixcontact.com/us/products/2303158>

Insertion bridge, pitch: 5.2 mm, number of positions: 3, color: gray



 Max. current carrying capacity: 24 A


EBL 2- 5 - Insertion bridge

2303145

<https://www.phoenixcontact.com/us/products/2303145>

Insertion bridge, pitch: 5.2 mm, number of positions: 2, color: gray



 Max. current carrying capacity: 24 A

UK 3 N BU - Feed-through terminal block

3001514

<https://www.phoenixcontact.com/us/products/3001514>




EBL 10- 5 - Insertion bridge

2303132

<https://www.phoenixcontact.com/us/products/2303132>

Insertion bridge, pitch: 5.2 mm, number of positions: 10, color: gray



 Max. current carrying capacity: 24 A

USBR 2-7 - Switching jumper

2303239

<https://www.phoenixcontact.com/us/products/2303239>

Switching jumper, pitch: 7 mm, number of positions: 2, color: silver



UK 3 N BU - Feed-through terminal block

3001514

<https://www.phoenixcontact.com/us/products/3001514>



USBRJ 2-7 - Switching jumper

2305538

<https://www.phoenixcontact.com/us/products/2305538>



Switching jumper, number of positions: 2, color: silver

D-UK 4/10 - End cover

3003020

<https://www.phoenixcontact.com/us/products/3003020>



End cover, length: 42.5 mm, width: 1.8 mm, height: 42.5 mm, color: gray

UK 3 N BU - Feed-through terminal block



3001514

<https://www.phoenixcontact.com/us/products/3001514>

D-UK 4/10 BU - End cover

3003101

<https://www.phoenixcontact.com/us/products/3003101>

End cover, length: 42.5 mm, width: 1.8 mm, height: 42.5 mm, color: blue



WS 3- 5 - Warning label

0805357

<https://www.phoenixcontact.com/us/products/0805357>

Warning plate, with 2 plastic screws, across 3 terminal blocks, pitch 5 mm



UK 3 N BU - Feed-through terminal block

3001514

<https://www.phoenixcontact.com/us/products/3001514>

WS 4- 5 - Warning label

0805344

<https://www.phoenixcontact.com/us/products/0805344>

Warning plate, with 2 plastic screws, across 4 terminal blocks, pitch 5 mm



WS 5- 5 - Warning label

0805331

<https://www.phoenixcontact.com/us/products/0805331>

Warning plate, with 2 plastic screws, across 5 terminal blocks, pitch 5 mm



UK 3 N BU - Feed-through terminal block



3001514

<https://www.phoenixcontact.com/us/products/3001514>

ZSR - Screw

2303608

<https://www.phoenixcontact.com/us/products/2303608>



Screw

FB-150

METER - Fixed bridge

0201595

<https://www.phoenixcontact.com/us/products/0201595>



Cross connection rail, for fixed bridging of identical inputs and outputs, made of Cu, nickel-plated, 1 m long

UK 3 N BU - Feed-through terminal block

3001514

<https://www.phoenixcontact.com/us/products/3001514>



EA 5-WS - Cover

1024085

<https://www.phoenixcontact.com/us/products/1024085>

Single covers, for covering one terminal block, with black symbol (lightning flash)
snap fit, color: transparent/yellow



EA 5 - Cover

1024014

<https://www.phoenixcontact.com/us/products/1024014>

Cover, material: ABS, color: transparent



UK 3 N BU - Feed-through terminal block

3001514

<https://www.phoenixcontact.com/us/products/3001514>



KSS 5 - Short-circuit connector

2303543

<https://www.phoenixcontact.com/us/products/2303543>



Short-circuit connector, pitch: 5 mm, number of positions: 2, color: black

PS-UK 2,5 B/Z-5 - Test plugs

3001226

<https://www.phoenixcontact.com/us/products/3001226>



Test plugs, number of positions: 1, color: red

UK 3 N BU - Feed-through terminal block

3001514

<https://www.phoenixcontact.com/us/products/3001514>



PS-UK 2,5 B/E - Test plugs

3001132

<https://www.phoenixcontact.com/us/products/3001132>



Test plugs, number of positions: 1, color: red

RPS - Reducing plug

0201647

<https://www.phoenixcontact.com/us/products/0201647>



Reducing plug, number of positions: 1, color: gray

UK 3 N BU - Feed-through terminal block



3001514

<https://www.phoenixcontact.com/us/products/3001514>

TS-K - Separating plate

1302215

<https://www.phoenixcontact.com/us/products/1302215>



Separating plate, length: 22 mm, width: 0.5 mm, height: 22 mm, color: gray

ATP-UK - Partition plate

3003224

<https://www.phoenixcontact.com/us/products/3003224>



Partition plate, length: 56 mm, width: 1.5 mm, height: 56 mm, color: gray

UK 3 N BU - Feed-through terminal block



3001514

<https://www.phoenixcontact.com/us/products/3001514>

SBS 5:UNBEDRUCKT - Marker card

1007219

<https://www.phoenixcontact.com/us/products/1007219>



Marker card, Card, white, unlabeled, can be labeled with: Marker pen, perforated, mounting type: snap into tall marker groove, snap into flat marker groove, for terminal block width: 5 mm, lettering field size: 6 x 5.1 mm, Number of individual labels: 250

SF-SL 0,6X3,5-100 S-VDE - Screwdriver

1212587

<https://www.phoenixcontact.com/us/products/1212587>



Actuation tool, for ST terminal blocks, VDE insulated, with slimmer insulation integrated in the blade, also suitable for use as a bladed screwdriver, size: 0.6 x 3.5 x 100 mm, 2-component grip, with non-slip grip

UK 3 N BU - Feed-through terminal block

3001514

<https://www.phoenixcontact.com/us/products/3001514>



NS 32 PERF 2000MM-VPE 10 - DIN rail perforated

1201002

<https://www.phoenixcontact.com/us/products/1201002>



DIN rail perforated, acc. to EN 60715, material: Steel, galvanized, passivated with a thick layer, G profile, color: silver, Pack of 10 (20 m)

NS 32 UNPERF 2000MM-VPE 10 - DIN rail, unperforated

1201015

<https://www.phoenixcontact.com/us/products/1201015>



DIN rail, unperforated, acc. to EN 60715, material: Steel, galvanized, passivated with a thick layer, G profile, color: silver, Pack of 10 (20 m)

UK 3 N BU - Feed-through terminal block

3001514

<https://www.phoenixcontact.com/us/products/3001514>



NS 35/ 7,5 PERF 2000MM - DIN rail perforated

0801733

<https://www.phoenixcontact.com/us/products/0801733>



DIN rail perforated, acc. to EN 60715, material: Steel, galvanized, passivated with a thick layer, Standard profile, color: silver, Pack of 25 (50 m)

NS 35/ 7,5 UNPERF 2000MM - DIN rail, unperforated

0801681

<https://www.phoenixcontact.com/us/products/0801681>



DIN rail, unperforated, acc. to EN 60715, material: Steel, galvanized, passivated with a thick layer, Standard profile, color: silver, Pack of 25 (50 m)

UK 3 N BU - Feed-through terminal block

3001514

<https://www.phoenixcontact.com/us/products/3001514>



NS 35/ 7,5 WH PERF 2000MM - DIN rail perforated

1204119

<https://www.phoenixcontact.com/us/products/1204119>



DIN rail perforated, acc. to EN 60715, material: Steel, Galvanized, white passivated, Standard profile, color: silver, Pack of 25 (50 m)

NS 35/ 7,5 WH UNPERF 2000MM-VPE 10 - DIN rail, unperforated

1204122

<https://www.phoenixcontact.com/us/products/1204122>



DIN rail, unperforated, acc. to EN 60715, material: Steel, Galvanized, white passivated, Standard profile, color: silver, Pack of 10 (20 m)

UK 3 N BU - Feed-through terminal block

3001514

<https://www.phoenixcontact.com/us/products/3001514>



NS 35/ 7,5 AL UNPERF 2000MM - DIN rail, unperforated

0801704

<https://www.phoenixcontact.com/us/products/0801704>



DIN rail, unperforated, acc. to EN 60715, material: Aluminum, uncoated, Standard profile, color: silver, Pack of 25 (50 m)

NS 35/ 7,5 ZN PERF 2000MM - DIN rail perforated

1206421

<https://www.phoenixcontact.com/us/products/1206421>



DIN rail perforated, acc. to EN 60715, material: Steel, galvanized, Standard profile, color: silver, Pack of 25 (50 m)

UK 3 N BU - Feed-through terminal block

3001514

<https://www.phoenixcontact.com/us/products/3001514>



NS 35/ 7,5 ZN UNPERF 2000MM - DIN rail, unperforated

1206434

<https://www.phoenixcontact.com/us/products/1206434>



DIN rail, unperforated, acc. to EN 60715, material: Steel, galvanized, Standard profile, color: silver, Pack of 25 (50 m)

NS 35/ 7,5 CU UNPERF 2000MM-VPE 10 - DIN rail, unperforated

0801762

<https://www.phoenixcontact.com/us/products/0801762>



DIN rail, unperforated, acc. to EN 60715, material: Copper, uncoated, Standard profile, color: copper-colored, Pack of 10 (20 m)

UK 3 N BU - Feed-through terminal block

3001514

<https://www.phoenixcontact.com/us/products/3001514>



NS 35/ 7,5 CAP - End cap

1206560

<https://www.phoenixcontact.com/us/products/1206560>

DIN rail end piece, for DIN rail NS 35/7.5



NS 35/15 PERF 2000MM - DIN rail perforated

1201730

<https://www.phoenixcontact.com/us/products/1201730>



DIN rail perforated, similar to EN 60715, material: Steel, galvanized, passivated with a thick layer, Standard profile, color: silver, Pack of 25 (50 m)

UK 3 N BU - Feed-through terminal block



3001514

<https://www.phoenixcontact.com/us/products/3001514>

NS 35/15 UNPERF 2000MM - DIN rail, unperforated

1201714

<https://www.phoenixcontact.com/us/products/1201714>



DIN rail, unperforated, similar to EN 60715, material: Steel, galvanized, passivated with a thick layer, Standard profile, color: silver, Pack of 25 (50 m)

NS 35/15 WH PERF 2000MM - DIN rail perforated

0806602

<https://www.phoenixcontact.com/us/products/0806602>



DIN rail perforated, similar to EN 60715, material: Steel, Galvanized, white passivated, Standard profile, color: white, Pack of 25 (50 m)

UK 3 N BU - Feed-through terminal block

3001514

<https://www.phoenixcontact.com/us/products/3001514>



NS 35/15 WH UNPERF 2000MM-VPE 10 - DIN rail, unperforated

1204135

<https://www.phoenixcontact.com/us/products/1204135>



DIN rail, unperforated, similar to EN 60715, material: Steel, Galvanized, white passivated, Standard profile, color: silver, Pack of 10 (20 m)

NS 35/15 AL UNPERF 2000MM - DIN rail, unperforated

1201756

<https://www.phoenixcontact.com/us/products/1201756>



DIN rail, unperforated, similar to EN 60715, material: Aluminum, uncoated, Standard profile, color: silver

UK 3 N BU - Feed-through terminal block

3001514

<https://www.phoenixcontact.com/us/products/3001514>



NS 35/15 ZN PERF 2000MM - DIN rail perforated

1206599

<https://www.phoenixcontact.com/us/products/1206599>



DIN rail perforated, similar to EN 60715, material: Steel, galvanized, Standard profile, color: silver, Pack of 25 (50 m)

NS 35/15 ZN UNPERF 2000MM - DIN rail, unperforated

1206586

<https://www.phoenixcontact.com/us/products/1206586>



DIN rail, unperforated, similar to EN 60715, material: Steel, galvanized, Standard profile, color: silver, Pack of 25 (50 m)

UK 3 N BU - Feed-through terminal block

3001514

<https://www.phoenixcontact.com/us/products/3001514>



NS 35/15 CU UNPERF 2000MM-VPE 10 - DIN rail, unperforated

1201895

<https://www.phoenixcontact.com/us/products/1201895>



DIN rail, unperforated, similar to EN 60715, material: Copper, uncoated, Standard profile, color: copper-colored, Pack of 10 (20 m)

NS 35/15 CAP - End cap

1206573

<https://www.phoenixcontact.com/us/products/1206573>

DIN rail end piece, for DIN rail NS 35/15



UK 3 N BU - Feed-through terminal block

3001514

<https://www.phoenixcontact.com/us/products/3001514>



NS 35/15-2,3 UNPERF 2000MM-VPE 10 - DIN rail, unperforated

1201798

<https://www.phoenixcontact.com/us/products/1201798>



DIN rail, unperforated, acc. to EN 60715, material: Steel, galvanized, passivated with a thick layer, Standard profile 2.3 mm, color: silver, Pack of 10 (20 m)

ZB 5 :UNBEDRUCKT - Zack marker strip

1050004

<https://www.phoenixcontact.com/us/products/1050004>



Zack marker strip, Strip, white, unlabeled, can be labeled with: PLOTMARK, CMS-P1-PLOTTER, mounting type: snapped, for terminal block width: 5.2 mm, lettering field size: 5.1 x 10.5 mm, Number of individual labels: 10

UK 3 N BU - Feed-through terminal block

3001514

<https://www.phoenixcontact.com/us/products/3001514>



ZB 5 CUS - Zack marker strip

0824962

<https://www.phoenixcontact.com/us/products/0824962>



Zack marker strip, can be ordered: Strip, white, labeled according to customer specifications, mounting type: snap into tall marker groove, for terminal block width: 5.2 mm, lettering field size: 5.15 x 10.5 mm, Number of individual labels: 10

ZB 5,LGS:FORTL.ZAHLEN - Zack marker strip

1050017

<https://www.phoenixcontact.com/us/products/1050017>



Zack marker strip, Strip, white, labeled, printed horizontally: consecutive numbers 1 ... 10, 11 ... 20, etc. up to 491 ... 500, mounting type: snapped, for terminal block width: 5.2 mm, lettering field size: 5.15 x 10.5 mm, Number of individual labels: 10

UK 3 N BU - Feed-through terminal block



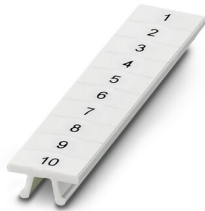
3001514

<https://www.phoenixcontact.com/us/products/3001514>

ZB 5,QR:FORTL.ZAHLEN - Zack marker strip

1050020

<https://www.phoenixcontact.com/us/products/1050020>



Zack marker strip, white, Printed vertically: consecutive numbers 1 ... 10, 11 ... 20, etc. up to 491 ... 500, mounting type: snapped, for terminal block width: 5.2 mm, lettering field size: 5.15 x 10.5 mm

ZB 5,LGS:GLEICHE ZAHLEN - Zack marker strip

1050033

<https://www.phoenixcontact.com/us/products/1050033>



Zack marker strip, Strip, white, labeled, can be labeled with: CMS-P1-PLOTTER, printed horizontally: Identical numbers 1 or 2, etc. up to 100, mounting type: snapped, for terminal block width: 5.2 mm, lettering field size: 5.15 x 10.5 mm, Number of individual labels: 10

UK 3 N BU - Feed-through terminal block



3001514

<https://www.phoenixcontact.com/us/products/3001514>

ZB 5,LGS:L1-N,PE - Zack marker strip

1050415

<https://www.phoenixcontact.com/us/products/1050415>



Zack marker strip, Strip, white, labeled, horizontal: L1, L2, L3, N, PE, L1, L2, L3, N, PE, mounting type: snapped, for terminal block width: 5.2 mm, lettering field size: 5.15 x 10.5 mm, Number of individual labels: 10

UC-TM 5 - Marker for terminal blocks

0818108

<https://www.phoenixcontact.com/us/products/0818108>



Marker for terminal blocks, Sheet, white, unlabeled, can be labeled with: BLUEMARK ID COLOR, BLUEMARK ID, BLUEMARK CLED, PLOTMARK, CMS-P1-PLOTTER, mounting type: snapped, for terminal block width: 5.2 mm, lettering field size: 4.6 x 10.5 mm, Number of individual labels: 96

UK 3 N BU - Feed-through terminal block

3001514

<https://www.phoenixcontact.com/us/products/3001514>



UC-TM 5 CUS - Marker for terminal blocks

0824581

<https://www.phoenixcontact.com/us/products/0824581>



Marker for terminal blocks, can be ordered: by sheet, white, labeled according to customer specifications, mounting type: snap into tall marker groove, for terminal block width: 5.2 mm, lettering field size: 10.5 x 4.6 mm, Number of individual labels: 96

UCT-TM 5 - Marker for terminal blocks

0828734

<https://www.phoenixcontact.com/us/products/0828734>



Marker for terminal blocks, Sheet, white, unlabeled, can be labeled with: TOPMARK NEO, TOPMARK LASER, BLUEMARK ID COLOR, BLUEMARK ID, BLUEMARK CLED, THERMOMARK PRIME, THERMOMARK CARD 2.0, THERMOMARK CARD, mounting type: snapped, for terminal block width: 5.2 mm, lettering field size: 4.6 x 10.5 mm, Number of individual labels: 72

UK 3 N BU - Feed-through terminal block

3001514

<https://www.phoenixcontact.com/us/products/3001514>



UCT-TM 5 CUS - Marker for terminal blocks

0829595

<https://www.phoenixcontact.com/us/products/0829595>



Marker for terminal blocks, can be ordered: by sheet, white, labeled according to customer specifications, mounting type: snap into tall marker groove, for terminal block width: 5.2 mm, lettering field size: 4.6 x 10.5 mm, Number of individual labels: 72

GBS 5-25X12 - Group marker label for terminal marking

0810588

<https://www.phoenixcontact.com/us/products/0810588>



Group marker label, snaps onto terminal center for screw, spring-cage and quick connection terminal blocks, labeled with a 25 x 12 mm label or manually with the B-STIFT, in the foot part with ZB 5

UK 3 N BU - Feed-through terminal block



3001514

<https://www.phoenixcontact.com/us/products/3001514>

GBS 5-25X5 - Group marker label for terminal marking

0829126

<https://www.phoenixcontact.com/us/products/0829126>



Group marking label, can be snapped into terminal center for screw, spring-cage, push-in, and fast connection terminal blocks, can be labeled with a 24 x 4 mm label or manually using B-STIFT, in the foot part with ZB 5

STP 5-2-ZB - Marker carriers

3037643

<https://www.phoenixcontact.com/us/products/3037643>



Marker carriers, snaps into ST 2,5 spring-cage terminal blocks, can be marked with UC-TM 5, UC-TMF 5, UCT-TM 5, UCT-TMF 5, ZB 5, or ZBF 5, gray, unlabeled, mounting type: snapped

UK 3 N BU - Feed-through terminal block

3001514

<https://www.phoenixcontact.com/us/products/3001514>



MPS-MT - Test plugs

0201744

<https://www.phoenixcontact.com/us/products/0201744>



Test plugs, with solder connection up to 1 mm² conductor cross section, number of positions: 1, color: gray

MPS-IH WH - Insulating sleeve

0201663

<https://www.phoenixcontact.com/us/products/0201663>

Insulating sleeve, color: white



UK 3 N BU - Feed-through terminal block



3001514

<https://www.phoenixcontact.com/us/products/3001514>

MPS-IH RD - Insulating sleeve

0201676

<https://www.phoenixcontact.com/us/products/0201676>

Insulating sleeve, color: red

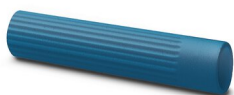


MPS-IH BU - Insulating sleeve

0201689

<https://www.phoenixcontact.com/us/products/0201689>

Insulating sleeve, color: blue



UK 3 N BU - Feed-through terminal block

3001514

<https://www.phoenixcontact.com/us/products/3001514>



MPS-IH YE - Insulating sleeve

0201692

<https://www.phoenixcontact.com/us/products/0201692>

Insulating sleeve, color: yellow



MPS-IH GN - Insulating sleeve

0201702

<https://www.phoenixcontact.com/us/products/0201702>

Insulating sleeve, color: green



UK 3 N BU - Feed-through terminal block

3001514

<https://www.phoenixcontact.com/us/products/3001514>



MPS-IH GY - Insulating sleeve

0201728

<https://www.phoenixcontact.com/us/products/0201728>

Insulating sleeve, color: gray



MPS-IH BK - Insulating sleeve

0201731

<https://www.phoenixcontact.com/us/products/0201731>

Insulating sleeve, color: black



UK 3 N BU - Feed-through terminal block



3001514

<https://www.phoenixcontact.com/us/products/3001514>

CLIPFIX 35 - End clamp

3022218

<https://www.phoenixcontact.com/us/products/3022218>

Quick mounting end clamp for NS 35/7,5 DIN rail or NS 35/15 DIN rail, with marking option, width: 9.5 mm, color: gray



CLIPFIX 35-5 - End clamp

3022276

<https://www.phoenixcontact.com/us/products/3022276>

Quick mounting end clamp for NS 35/7,5 DIN rail or NS 35/15 DIN rail, with marking option, with parking option for FBS...5, FBS...6, KSS 5, KSS 6, width: 5.15 mm, color: gray



UK 3 N BU - Feed-through terminal block

3001514

<https://www.phoenixcontact.com/us/products/3001514>

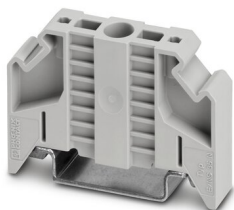


E/NS 35 N - End clamp

0800886

<https://www.phoenixcontact.com/us/products/0800886>

End clamp, width: 9.5 mm, color: gray



E/UK - End clamp

1201442

<https://www.phoenixcontact.com/us/products/1201442>

End clamp, material: PA, color: gray, Mounting on a DIN rail NS 32 or NS 35



UK 3 N BU - Feed-through terminal block

3001514

<https://www.phoenixcontact.com/us/products/3001514>



E/UK 1 - End clamp

1201413

<https://www.phoenixcontact.com/us/products/1201413>



End clamps, for supporting the ends of double-level and three-level terminal blocks, width: 10 mm, color: gray

PSBJ 3/13/4 - Female test connector

0201304

<https://www.phoenixcontact.com/us/products/0201304>



Female test connector, number of positions: 1, color: silver

UK 3 N BU - Feed-through terminal block

3001514

<https://www.phoenixcontact.com/us/products/3001514>



PSB 3/10/4 - Female test connector

0601292

<https://www.phoenixcontact.com/us/products/0601292>

Female test connector, number of positions: 1, color: silver



Phoenix Contact 2023 © - all rights reserved

<https://www.phoenixcontact.com>

Phoenix Contact USA

586 Fulling Mill Road

Middletown, PA 17057, United States

(+717) 944-1300

info@phoenixcon.com