

# Realtek AMB82-Mini IoT AI Camera Arduino Dev. board - Wi-Fi & Bluetooth, H264/H265 Video, 1080p sensor, multiple IO, Tensorflow-Lite AI

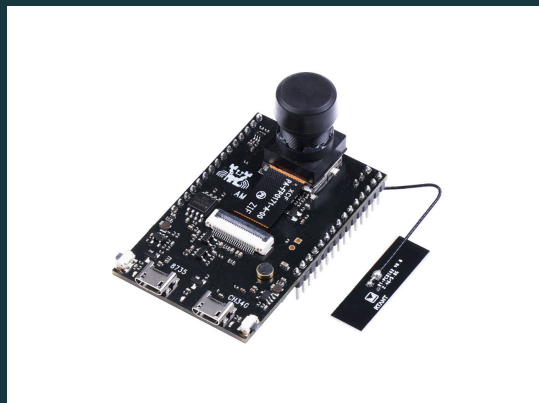
AMB 82-MINI development board is adopting Realtek RTL 8735 BDM So C, it is suitable for battery-powered appliances or equipment required AI network camera applications, no worry to power consumption and IoT security. AMB 82-MINI is easy to program and learn AI model with this powerful IoT development kit.

SKU

102991774

UPDATED

2026-04-15 08:42:20



# Overview



Figure 1. Amb82 Mini Rtl8735B Iot Ai Camera Dev. Board Feature

AMB 82-MINI development board is adopting Realtek RTL 8735 BDM So C, it is suitable for battery-powered appliances or equipment required AI network camera applications, no worry to power consumption and IoT security. AMB 82-MINI is easy to program and learn AI model with this powerful IoT development kit.

# Key Features

01

**Worldwide leading Ultra-Low-Power AI Wi-Fi IP Camera SoC : 8-in-1 SoC featuring embedded AI & NPU, High resolution up to 2K**

02

**Fast boot-up in milliseconds; ultra-low power in microampere**

03

**Supporting battery-powered, AI & IoT Ecosystems**

04

**Multiple streams real-time H.265/H.264/JPEG encoding**

05

**SDK supports free RTOS, IAR, GCC, Arduino IDE**

# Product Gallery

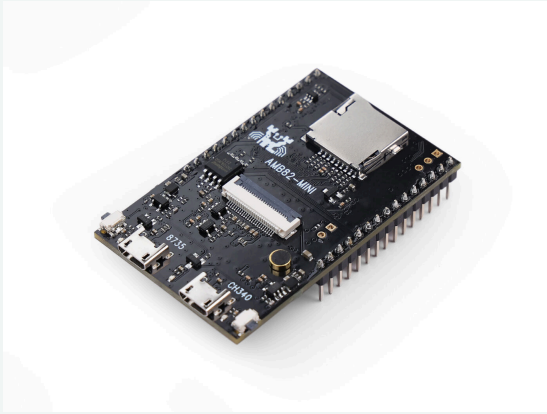


Figure 1. 102991774 Realtek Amb82 Mini lot Ai Camera Arduino Dev. Board 45Font 1

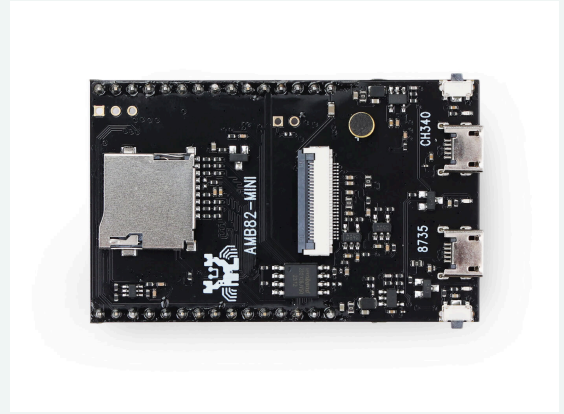


Figure 2. 102991774 Realtek Amb82 Mini lot Ai Camera Arduino Dev. Board Font 1

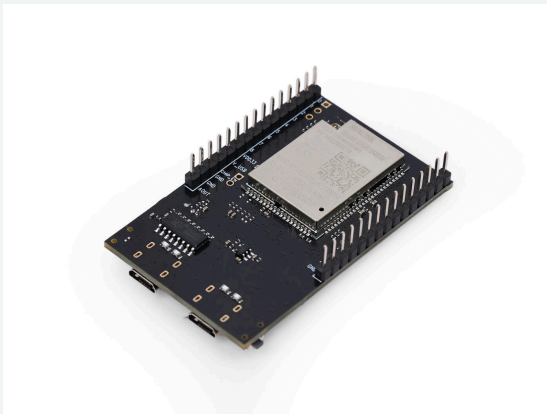


Figure 3. 102991774 Realtek Amb82 Mini lot Ai Camera Arduino Dev. Board 45Back 1

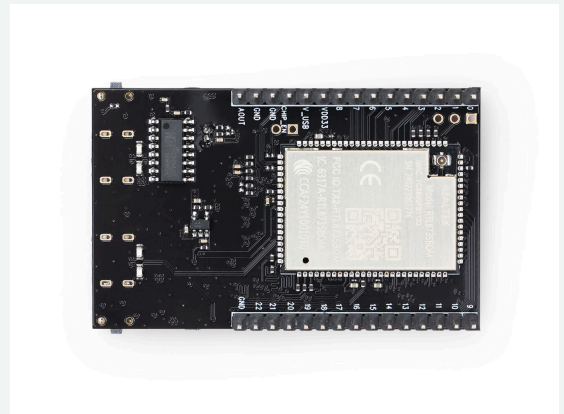


Figure 4. 102991774 Realtek Amb82 Mini lot Ai Camera Arduino Dev. Board Back 1



Figure 5. 102991774 Realtek Amb82 Mini lot Ai Camera Arduino Dev. Board All 1

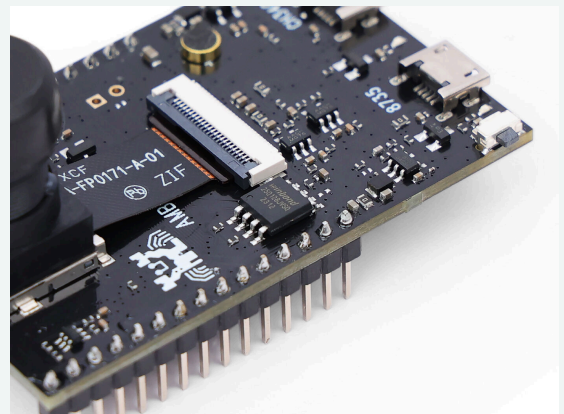


Figure 6. 102991774 Realtek Amb82 Mini lot Ai Camera Arduino Dev. Board Feature 1

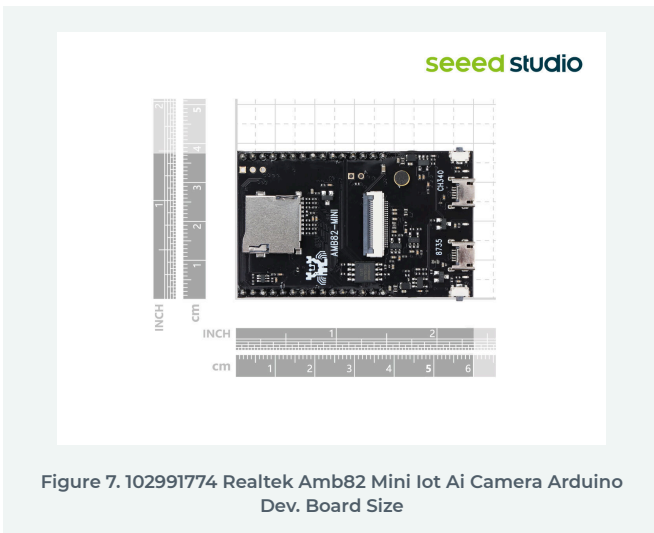


Figure 7. 102991774 Realtek Amb82 Mini IoT AI Camera Arduino Dev. Board Size

# Specification

## Parameter: Detail

Parameter	Detail
MCU	ARMv8M up to 500MHz
NPU	Intelligent Engine @ 0.4 TOPS
Memory	internal DDR2 128MB on SoC and 16MB external SPI Nor flash on Dev. Board
Wi-Fi	802.11 a/b/g/n 1x1, Dualband 2.4GHz/5GHz Wi-Fi
Wi-Fi simple config	
Bluetooth	BLE 5.1
Security	Hardware cryptographic engine
Secure boot (optional) Trust-Zone (optional)	
Wi-Fi WEP, WPA, WPA2, WPA3, WPS	
Audio Codec	ADC/DAC/I2S
ISP/Video	HDR / 3DNR / WDR ; H264/H265/JPEG video encoder 1080p@30fps +720p@30fps

# Applications

AIoT

AI camera

Battery camera

Security camera

Smart home

Industrial applications

# Part List

Realtek AMB82-MINI Dev. Board	x 1
Dualband Wi-Fi (2.4GHz/5GHz) ipex antenna	x 1
Taiyee camera module(F37)	x 1

# Compliance & Logistics

HSCODE	8517180050
USHSCODE	8517180050
UPC	
EUHSCODE	8543709099
COO	CHINA

Logistics	Value
ECCN	EAR99
HSCODE	8517180050
USHSCODE	8517180050
EUHSCODE	8543709099
COO	CHINA

# Resource Links

- <https://www.seeedstudio.com/AMB82-MINI-RTL8735B-IoT-AI-Camera-Dev-Board-p-5584.html>
- [User Manual](#)

**Seeed Technology Co.,Ltd.**  
 9F, Building G3, International E City,  
 Zhongshanyuan Road, Nanshan, Shenzhen, China

**Tel:** +86 0755-80695676  
**Web:** [www.seeed.cc](http://www.seeed.cc)  
**Shop:** [www.seeedstudio.com](http://www.seeedstudio.com)